

# Welcome to the AccessibilityOnline Webinar Series



A collaborative program between the  
ADA National Network and the  
U.S. Access Board



**The Session is Scheduled to begin at 2:30pm Eastern Time**  
**We will be testing sound quality periodically**

**Audio and Visual are provided through the on-line webinar system. This session is closed captioned.** Individuals may also listen via telephone by dialing 1-712-432-3100 code 930098 (This is **not** a Toll Free number)

The content and materials of this training are property of the US Access Board and the Great Lakes ADA Center and cannot be used and/or distributed without permission. This program is funded through a contract agreement with the U.S. Access Board. For permission to use training content or obtain copies of materials used as part of this program please contact us by email at [adata@adagreatlakes.org](mailto:adata@adagreatlakes.org) or toll free (877)232-1990 (V/TTY)

[www.AccessibilityOnline.org](http://www.AccessibilityOnline.org)



## Listening to the Webinar



- ▶ The audio for today's webinar is being broadcast through your computer. Please make sure your speakers are turned on or your headphones are plugged in.
- ▶ You can control the audio broadcast via the Audio & Video panel. You can adjust the sound by "sliding" the sound bar left or right.
- ▶ If you are having sound quality problems check your audio controls by going through the Audio Wizard which is accessed by selecting the microphone icon on the Audio & Video panel



2



## Listening to the Webinar, *continued*

If you do not have sound capabilities on your computer or prefer to listen by phone, dial:

**1-712-432-3100**


**Pass Code:  
930098**

This is **not** a Toll Free number

3



## Captioning

- ▶ Real-time captioning is provided during this webinar.
- ▶ The caption screen can be accessed by choosing the  icon in the Audio & Video panel. ↓
- ▶ Once selected you will have the option to resize the captioning window, change the font size and save the transcript.



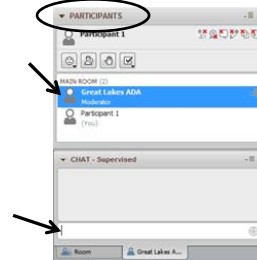
4



## Submitting Questions

**For Q&A within Webinar Platform:** Using your mouse, choose “Great Lakes ADA” from the Participant list and double click. A tab titled “Great Lakes ADA” will appear in the chat panel. Type your question in the text box and “enter”. Your question will be submitted to the presenters. It will not be viewable by other participants. (Keyboard - F6, Arrow up or down to locate “Great Lakes ADA” and select to send a message )

- ▶ If you are listening by phone and not logged in to the webinar, you may ask questions by emailing them to [adaconferences@adagreatlakes.org](mailto:adaconferences@adagreatlakes.org)



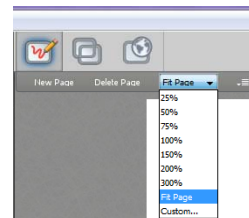
**Please note:** This webinar is being recorded and can be accessed on the AccessibilityOnline website at [www.accessibilityonline.org/Archives](http://www.accessibilityonline.org/Archives) within 24 hours after the conclusion of the session.

5



## Customize Your View

- ▶ Resize the Whiteboard where the Presentation slides are shown to make it smaller or larger by choosing from the drop down menu located above and to the left of the whiteboard. The default is “fit page”



6



## Customize Your View *continued*



- ▶ Resize/Reposition the Chat, Participant and Audio & Video panels by “detaching” and using your mouse to reposition or “stretch/shrink”. Each panel may be detached using the ☰ icon in the upper right corner of each panel.

7



## Technical Assistance



- ▶ If you experience any technical difficulties during the webinar:
  1. Send a private chat message to the host by double clicking “Great Lakes ADA” in the participant list. A tab titled “Great Lakes ADA” will appear in the chat panel. Type your comment in the text box and “enter” (Keyboard - F6, Arrow up or down to locate “Great Lakes ADA” and select to send a message ); or
  2. Email [adaconferences@adagreatlakes.org](mailto:adaconferences@adagreatlakes.org); or
  3. Call 877-232-1990 (V/TTY)

8

## Presenters



**Marsha Mazz**  
**US Access Board**



**Kim Paarlberg**  
**International Code  
Council (ICC)**

9

## Accessible Means of Egress

### Session Agenda

- **Planning**
- **MOE: Minimum Number**
- **Components of Accessible MOE**
- **Other Requirements**

10

# Pre-Planning for Emergencies

- Fire evacuation plans
- Fire safety plans
- Lockdown plans
- Associated drills
- Worked out with the building owner/renter and the fire department
- Updated annually or when necessitated by changes
- Available for review



11

# Pre-Planning for Emergencies

## Required in:

- Assembly
- Churches over 2,000 occupants
- Educational
- College dormitories
- High Hazard
- Institutional
- Hotels
- Group homes

12

## **Pre-Planning for Emergencies**

**Required in:**

- **High-rise buildings**
- **Covered malls > 50,000 sq.ft.**
- **Mercantile & Factory (> 500 occupants on the 1st floor and basements or 2nd floor > 100 occupants)**
- **Underground buildings**
- **Assembly, Educational and Mercantile with atriums**

13

## **Fire Evacuation Plans**

- **Emergency routes**
- **Strategy - Evacuation or defend in place**
- **Critical equipment operation**
- **Assisted rescue procedures**
- **Verifying full evacuation**
- **Emergency responders**
- **Notification of occupants**
- **Notification of fire department**
- **Emergency voice/alarm communication system**

14

## **Fire Safety Plans**

- **Reporting emergency**
- **Evacuation or relocation of occupants**
- **Site plans – occupancy assembly point, fire hydrants, fire truck route**
- **Floor plans – exits, routes, areas of refuge, fire alarm, extinguishers, fire hoses**
- **Major fire hazards**
- **Persons responsible**

15

## **Emergency Drills**

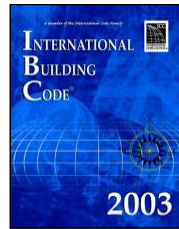
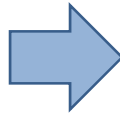
- **Assembly – quarterly**
- **Business – annually**
- **Educational – monthly**
- **Factory – annually**
- **Institutional – quarterly on each shift**
- **Hotel - quarterly on each shift**
- **Apartments/dorms – 4 times annually**
- **Group homes - quarterly on each shift**
- **High rise - annually**

16



# ADA & ABA Standards §207

Require compliance with the International Building Code (IBC) for accessible means of egress



2003 edition  
 (§1007)

OR



2000 edition &  
2001 Supplement  
 (§1003.2.13)

17

# ADA & ABA Standards

What about compliance  
with later editions?

Permitted where  
equivalent or better  
("equivalent facilitation" in  
the ADA Standards §103)



18

# Means of Egress (MOE)

A means of egress is an obstructed path to leave buildings, structures, and spaces

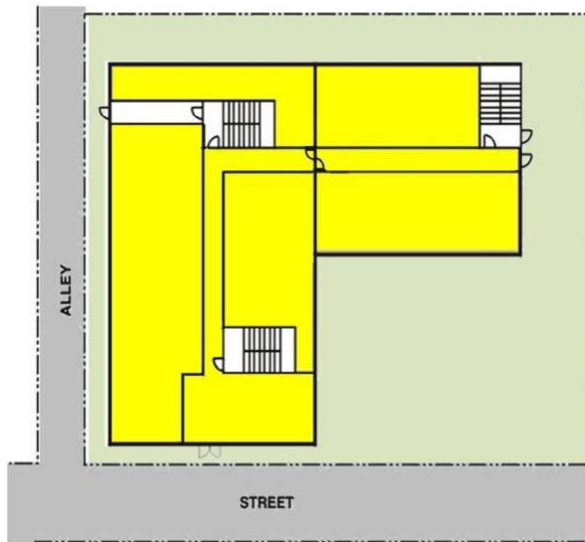
Comprised of:

- Exit Access
- Exits
- Exit Discharge



19

## MOE: Exit Access

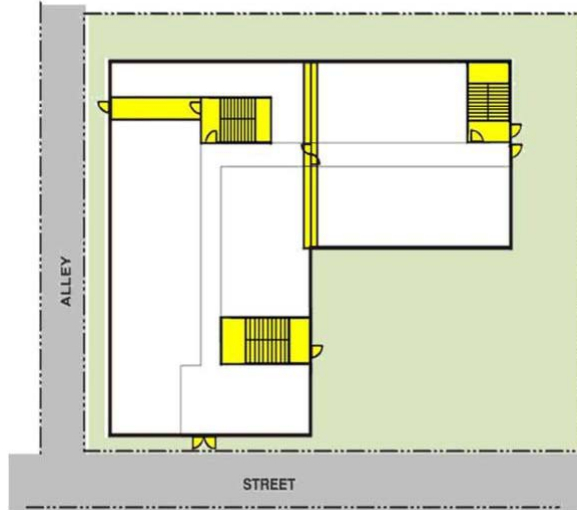


The path from any location in a building to an exit



20

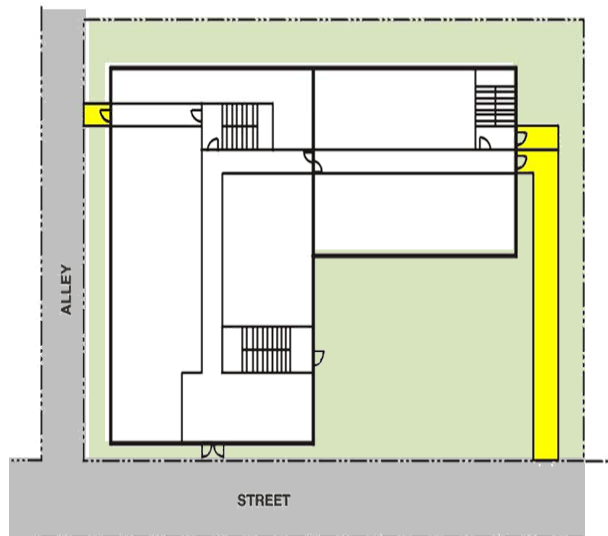
## MOE: Exits



Exits include doors to the outside, enclosed exit stairways, or horizontal exits

21

## MOE: Exit Discharge



The path from an exit to a public way (i.e., street or alley)

22

# Accessible MOE

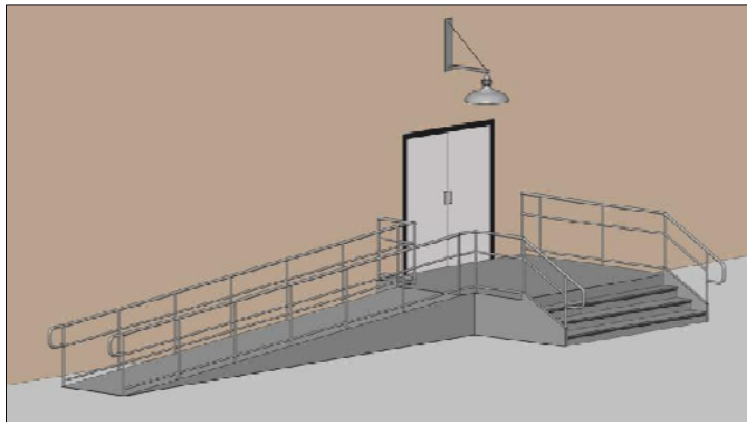
An accessible means of egress is:

“continuous and unobstructed way of egress travel from any point in a building or facility that provides an accessible route to an area of refuge, a horizontal exit, or a public way.” (IBC)

23

# Accessible MOE

Allow for self evacuation when possible



24

# Accessible MOE

## Assisted rescue when necessary

- Areas of refuge
- Exterior areas for assisted rescue
- Defend in place (i.e., hospitals, jails)
- Elevators with standby power
- Two-way communication



25

# AMOE: Minimum Number

## Minimum number of AMOE required:

- 1 - where 1 MOE required
- 2 - if more than 1 MOE required

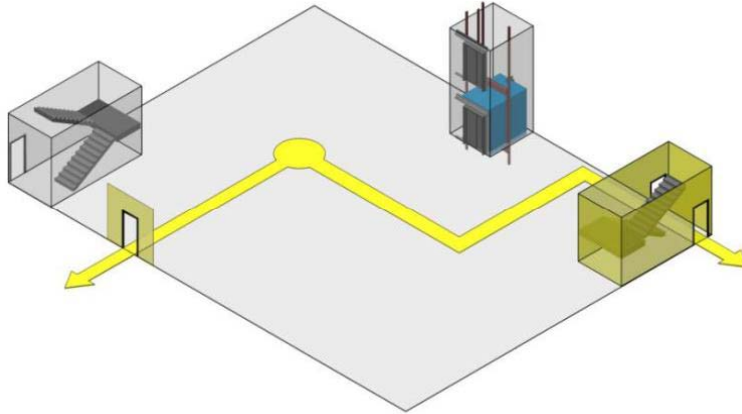
## Exceptions:

- Existing facilities
- Areas not required to be accessible

26

# MOE: Minimum Number

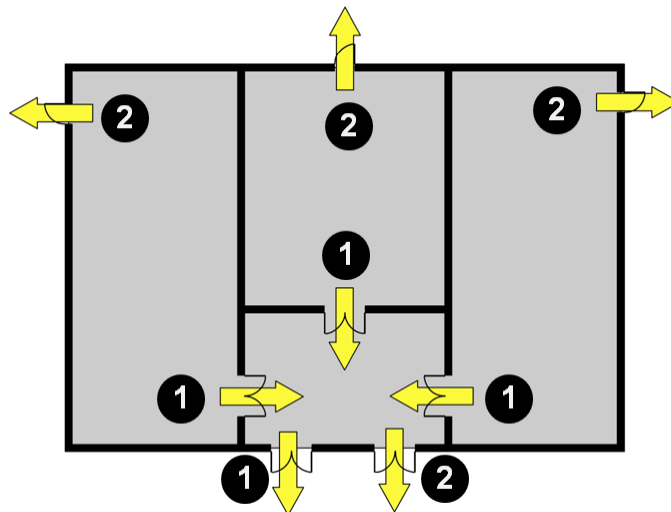
IBC requires 2 or more MOE in most facilities with few exceptions



27

# MOE: Minimum Number

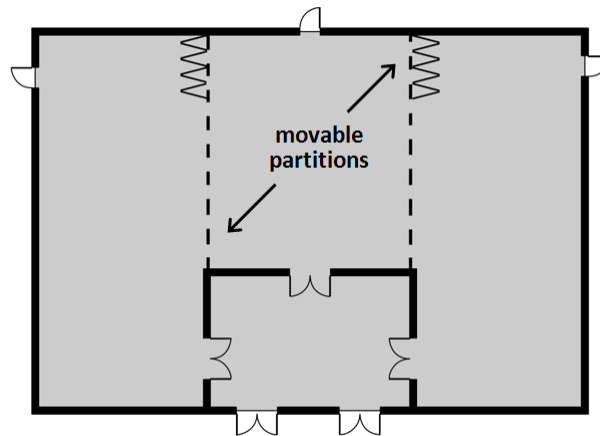
MOE required from each space and room



28

# MOE: Minimum Number

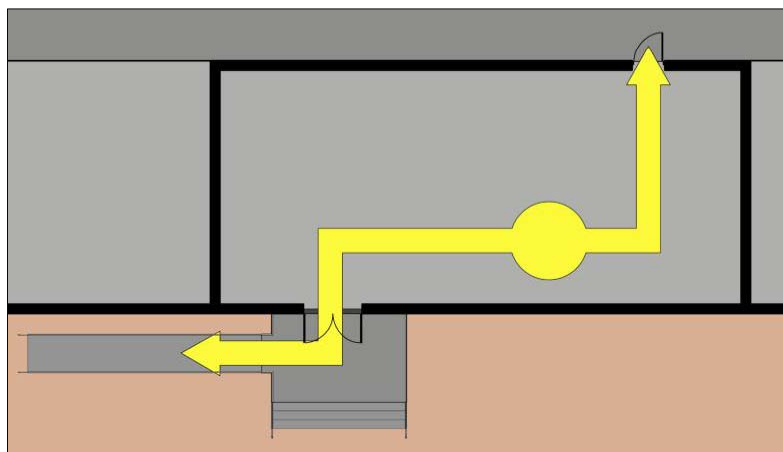
Required MOE must be maintained under all conditions, including temporary divisions of space



29

# MOE: Minimum Number

At least 2 MOE required

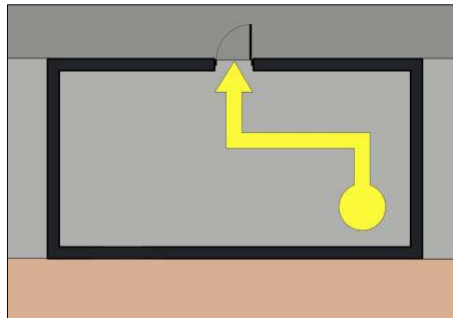


30

## Example: 1 MOE/AMOE

1 MOE & 1 AMOE allowed under these conditions:

- mercantile occupancy; and
- 49 or fewer occupants; and
- 75' max. travel distance from farthest point



31

## Exit Discharge

- Accessible route to a public way or
- Interior area of refuge or
- Exterior area for assisted rescue



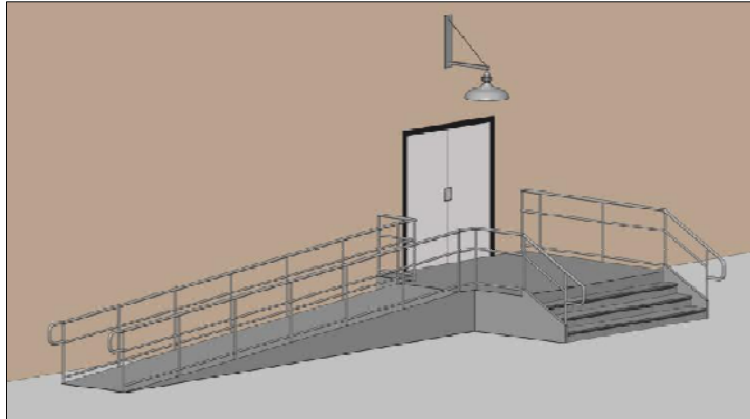
*No exceptions for sprinklered buildings*

32



# Exit Discharge

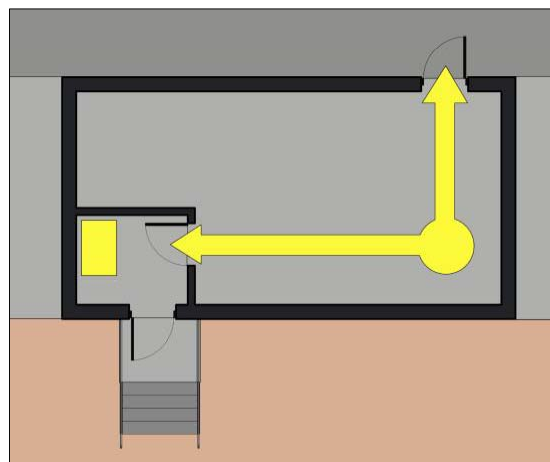
Accessible route to a public way



33

# Exit Discharge

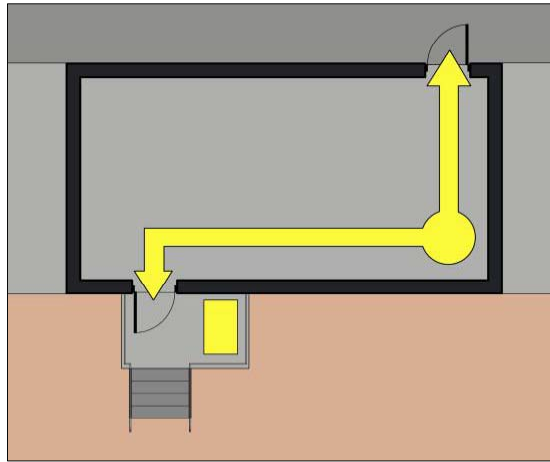
Interior Area of Refuge



34

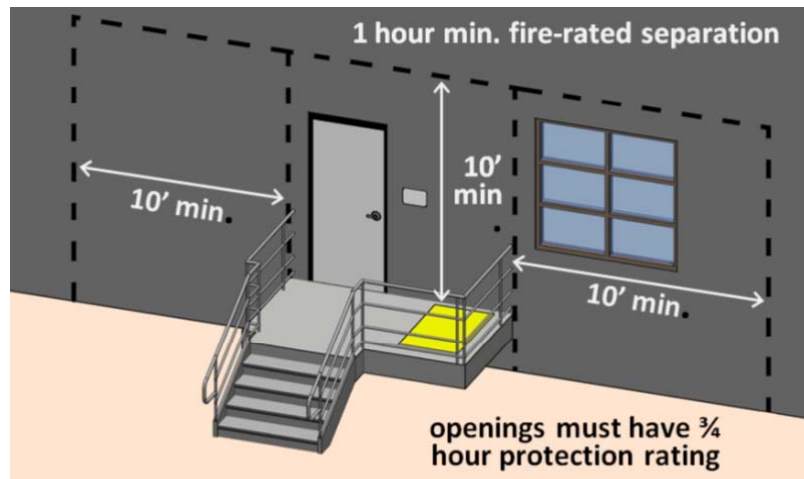
# Exit Discharge

## Exterior Area for Assisted Rescue



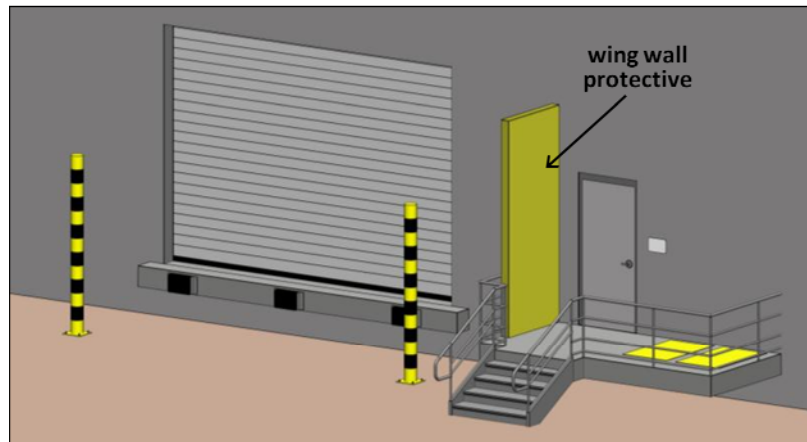
35

# Exterior Area for Assisted Rescue



36

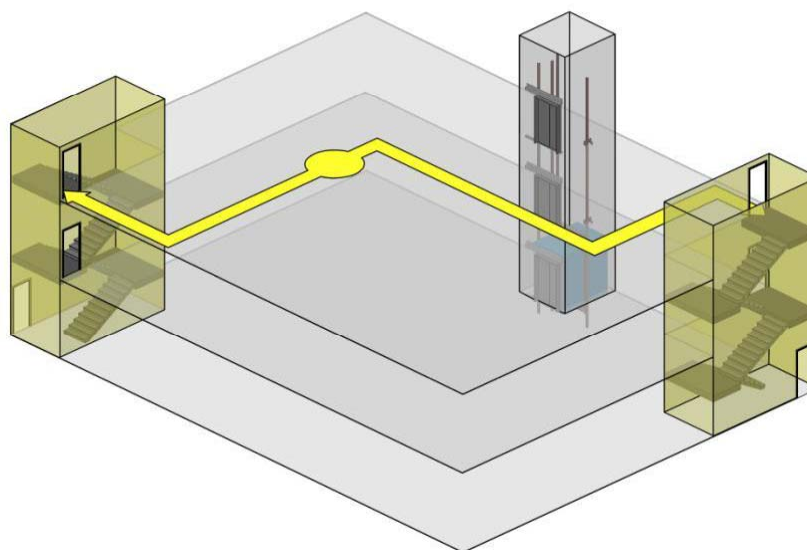
## Exterior Area for Assisted Rescue



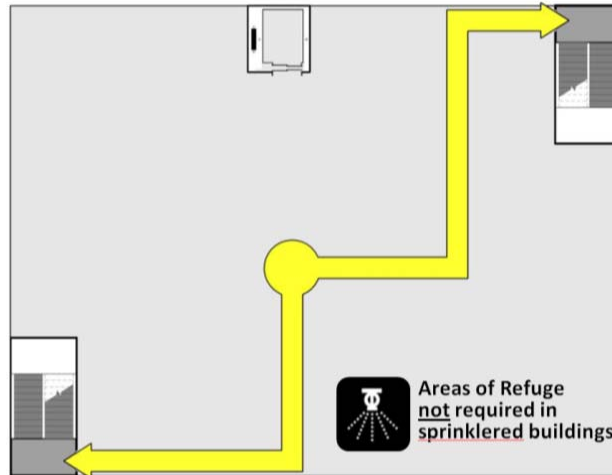
2012 IBC: New provision for alternative protection

37

## Exit Access: Upper Floors



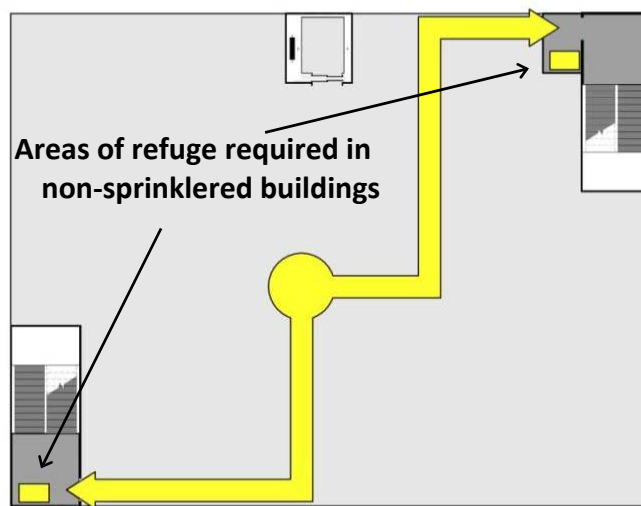
## Exit Access: Upper Floors



AMOE on floors above or below level of exit discharge connect to exit stairs

39

## Exit Access: Upper Floors



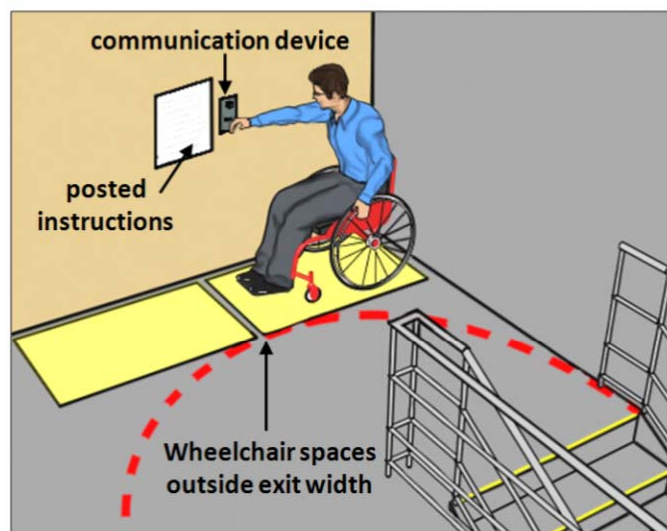
40

## Areas of Refuge

- on accessible route
- separated by a smoke barrier
- direct access to exit stairway, elevator with standby power
- 48" min. stairway width
- 30" x 48" space (1 for every 200 occupants) located outside general MOE path
- two-way communication system
- identification and instructional signage
- alternative: horizontal exit

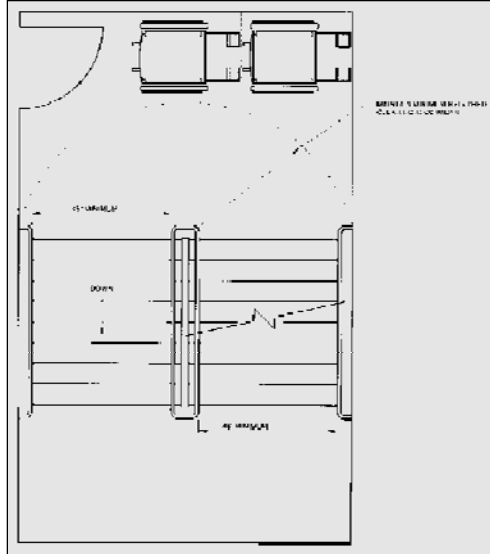
41

## Areas of Refuge



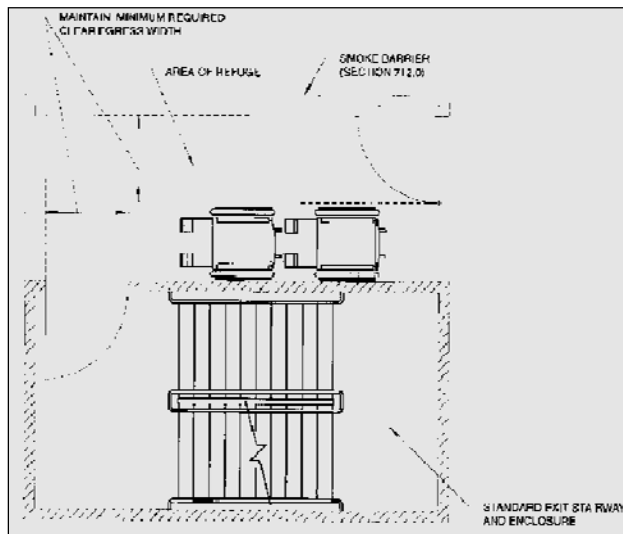
42

# Areas of Refuge



43

# Areas of Refuge



44

## Areas of Refuge

Not required in:



- buildings fully equipped with an automatic sprinkler system
- open parking garages
- open exit stairways between floors in buildings with NFPA13 systems
- apartment buildings

45

## Stairway Width (48" min)

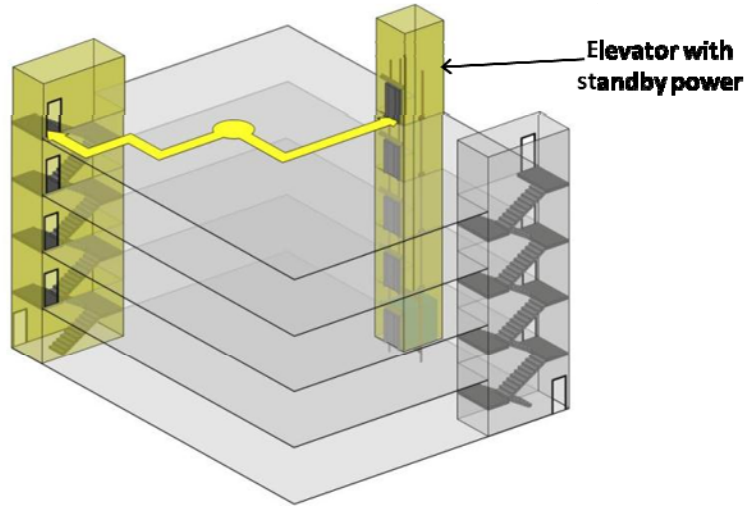
Stairway width 48" min. (measured between handrails) not required:



- in buildings fully equipped with an automatic sprinkler system
- where horizontal exits are provided

46

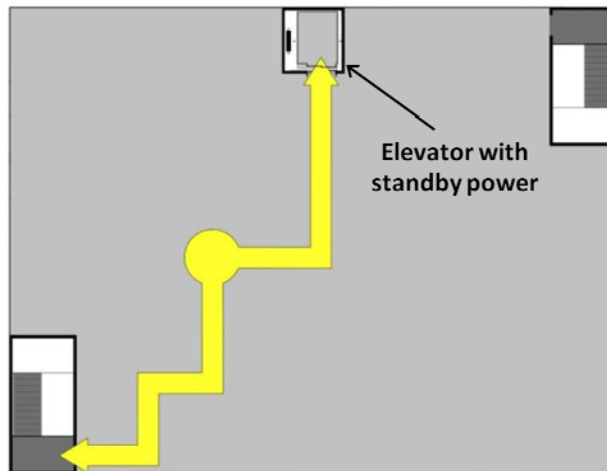
## Elevator with Standby Power



Required in buildings 5 stories or higher

47

## Elevator with Standby Power



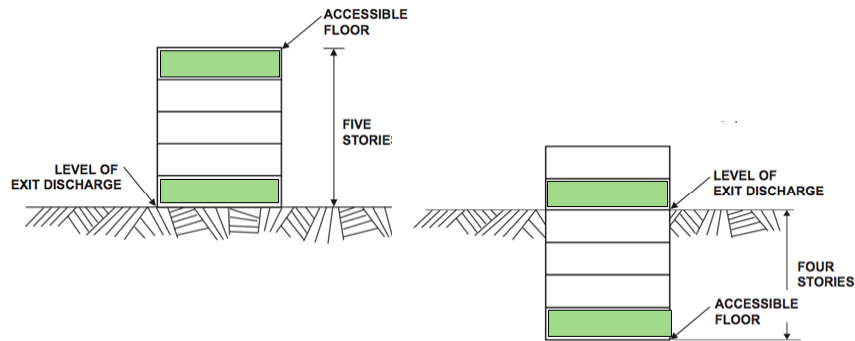
Counts as 1 of 2 accessible MOE

48



# Elevator with Standby Power

Required in buildings with 4 or more stories above or below the level of exit discharge



49

# Elevator with Standby Power

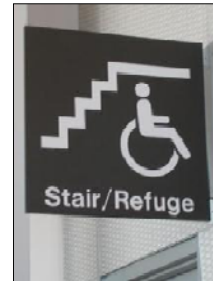
Exceptions for standby power:

- Sprinklered buildings with horizontal exits
- Ramps from each level

50

# Signage

- Elevators
- Exits
- Two way communication
- Areas of refuge
- Exterior areas for assisted rescue



51

# Protruding Objects

Standards limit protrusions from walls and posts along all circulation paths, including stairways



52

# Requirements New to the 2009 IBC

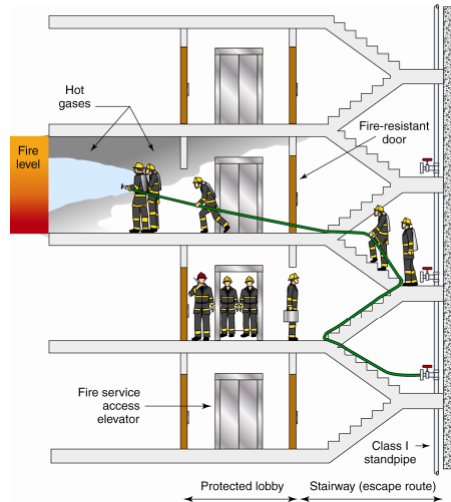
53

## Fire Service Access Elevators

- **Required in buildings with floor >120 ft. above fire department vehicle access**
- **Must open into a fire service access elevator lobby and have direct access to an exit enclosure**
- **Numerous requirements: lobby protection, minimum lobby size, standby power, monitoring of elevator, protection of wiring, etc.**

54

## Fire Service Access Elevators



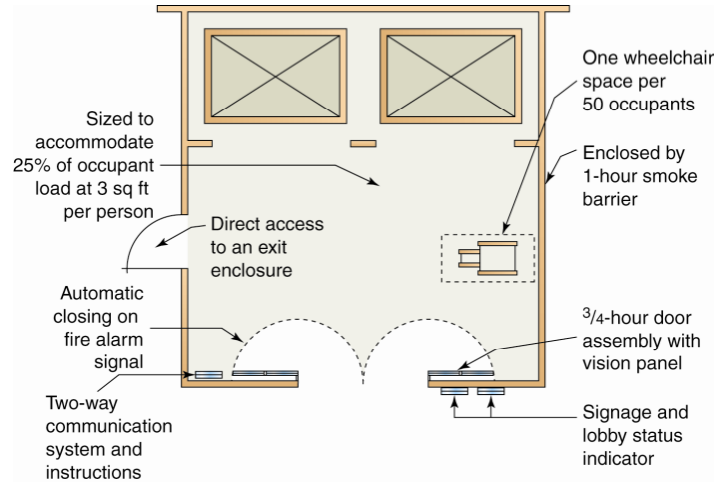
55

## Occupant Evacuation Elevators

- Used for occupant self evacuation prior to emergency recall
- Must open into a elevator lobby and have direct access to an exit enclosure
- Numerous requirements: lobby protection, minimum lobby size, lobby status indicators, standby power, monitoring of elevator, protection of wiring, etc.

56

# Occupant Evacuation Elevators



**Occupant Evacuation Elevator Lobby**

57

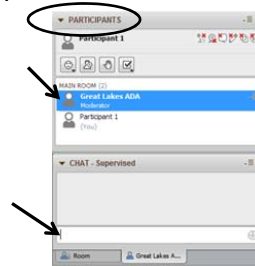


## Questions



**For Q&A within Webinar Platform:** Using your mouse, choose “Great Lakes ADA” from the Participant list and double click. A tab titled “Great Lakes ADA” will appear in the chat panel. Type your question in the text box and “enter”. Your question will be submitted to the presenters. It will not be viewable by other participants. (Keyboard Command- F6 and arrow up or down to locate “Great Lakes ADA” and select to send a message )

- If you are listening by phone and not logged in to the webinar, you may ask questions by emailing them to [adaconferences@adagreatlakes.org](mailto:adaconferences@adagreatlakes.org)



58



## **International Code Council**

**888-ICC-SAFE (888-422-7233)**

**E-mail: [CareCenter@iccsafe.org](mailto:CareCenter@iccsafe.org)**

**[www.iccsafe.org](http://www.iccsafe.org)**

59



## **U.S. Access Board**

**(800) 872-2253 (voice)**

**(800) 993-2822 (TTY)**

**E-mail: [ta@access-board.gov](mailto:ta@access-board.gov)**

**[www.access-board.gov](http://www.access-board.gov)**

60

**Thank you for participating  
in today's webinar**



**Next session:**

***2010 ADA Standards for Accessible Design***

**March 1st**

**[www.accessibilityonline.org](http://www.accessibilityonline.org)**

**(877) 232-1990 (v/TTY)**

61